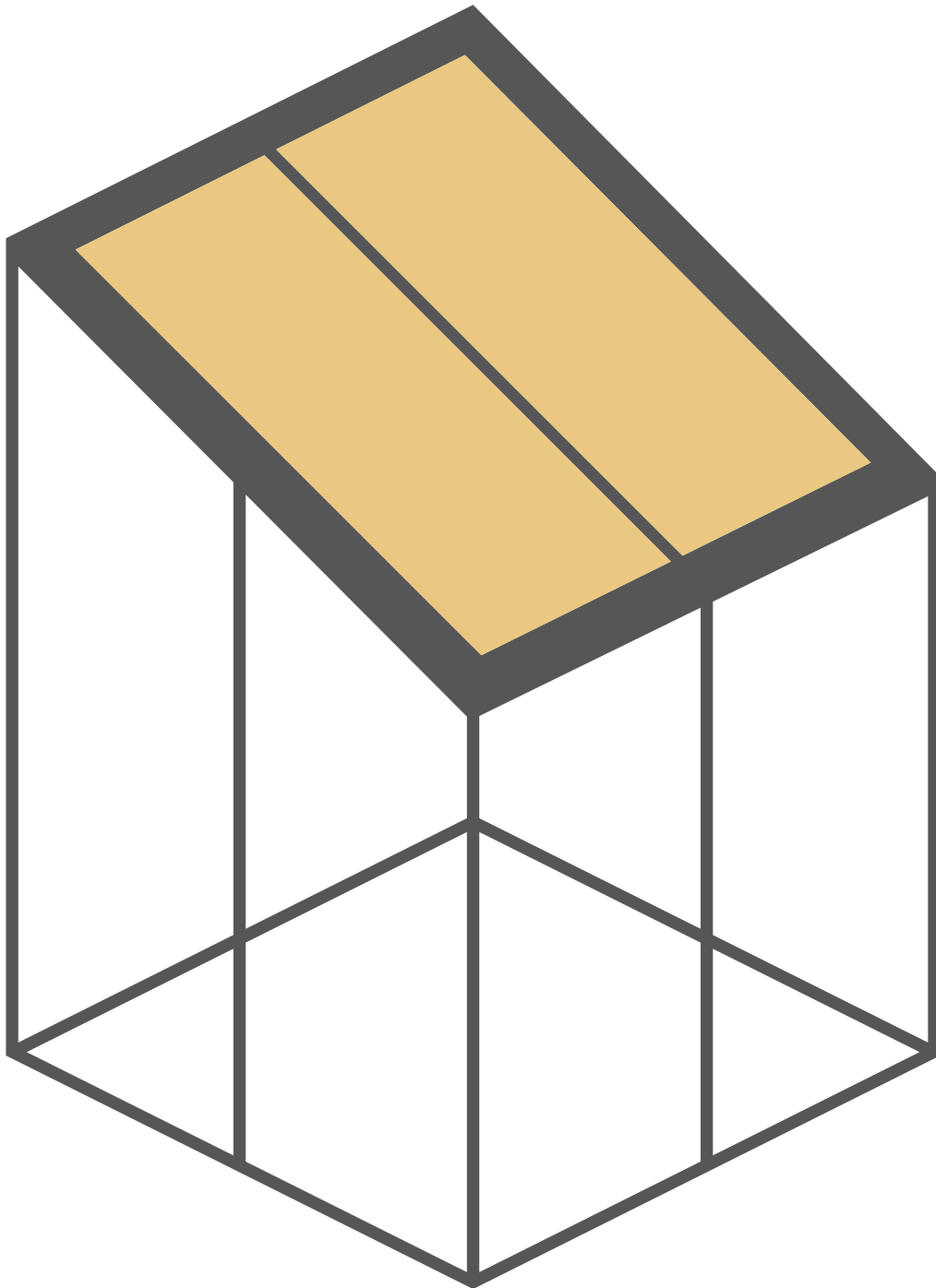


SDL ALERIO

Glass canopy



PRODUCT DATA SHEET

GLASS CANOPY SDL ALERIO



1

EAVES & VERTICAL ELEMENTS

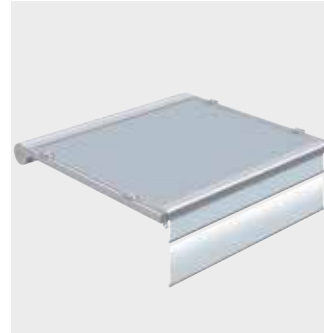
- The hollow chamber of the eaves can be reinforced using a steel insert depending on the structural requirements.
- Roof system with additional vertical elements (sliding, slide-and-turn systems, non-insulated bi-folding doors or fixed elements) turn the structure into a glass house.



2

INTERNAL STRUCTURAL MEMBERS

- Two different rafter sizes depending on structural requirements
- LED lighting possible as an option



4

COORDINATED SHADING

- Coordinated under-roof or on-roof awnings as well as vertical shading available to match the system



3

MULTI-SECTION POST (OPTIONAL)

- Concealed drainage in the post
- The downpipe can also be reached later



5

EDGE BEAM WITH CROSSBEAM GLAZING

- The geometry of the edge beam is selected in such a way that both the bracket for the under-roof awning and for the crossbeam glazing is integrated.



6

ONE-PIECE WALL JOINT

- Cable routing for lighting, shading and other control components is concealed through a cable duct under the wall joint

GLASS CANOPY

SDL ALERIO

System features

The glass canopy system SDL Alerio is a non-insulated aluminium profile-system with internal structural members. The profile, which has been specially designed for this application, is used to achieve filigree constructions. Application areas are open, partly closed and closed glass canopies (glass houses).

DESIGN FEATURES

Various versions of the system are available to choose from:

- Version as monopitch roof
- Can be set up as a free-standing construction or integrated into the existing house architecture using a wall joint.
- Roof drainage via gutter. Concealed drainage can be installed in the posts.
- The one-piece wall joint allows for simple installation. The rafters are bolted directly onto the wall joint.
- The roof has a pitch from 5° to 20°.
- There are two different posts depending on the version.
- Single glazing made of laminated safety glass with a thickness of 8, 10 or 12 mm is used.
- The powder-coated Solarlux aluminium system profiles join together to form a harmonic unit. The design has a timeless elegance.
- The comprehensive range of profiles means you can always find the right option for the size and structural requirements of your property. Steel reinforcements can be inserted into the hollow chambers of the bearing profiles. This facilitates large roof constructions and maximum opening widths and spans.
- The posts can be slid into place from the end of the eaves, enabling optimum structural use of the profile cross-sections. The positioning of the posts is variable.
- The glass canopy can be lit elegantly using spotlights built into the roof beams. Cables are routed concealed through a cable duct underneath the wall joint.
- The system is available with an under-roof awning or on-roof awning as well as with vertical shading as an option.

SERVICE FEATURES

Structural analysis tables are available for construction and calculation purposes during the design phase. Property-specific structural analyses for the system are created shortly before order fulfilment.

- If the glass canopy has been ordered glass-ready, the glass dimensions are enclosed with the order confirmation.
- The glass canopy is delivered pre-fabricated. The high degree of pre-fabrication significantly reduces the installation time.
- The roof system does not require silicone sealant.
- The following vertical elements are recommended for use in the glass canopy: Solarlux SL 20e, SL 20Re, SL 23, SL 25, SL 25R, SL 25 XXL, SL 35 and SL 45.

ENVIRONMENT

- Certified disposal in accordance with DIN EN ISO 14001:2009
- Sustainable manufacturing
- Internal production control DIN EN 1090